

POSB SMART BUDDY SYSTEM



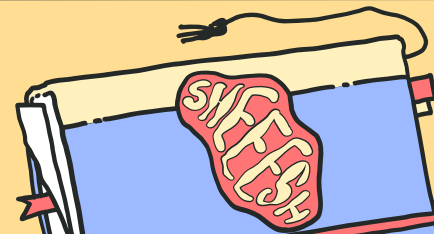
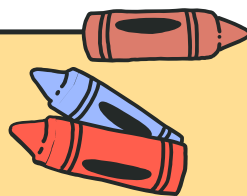
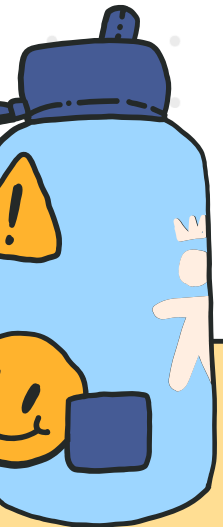
POSB
SMART
BUDDY
READERS
TO CHECK
DAILY
BALANCES



STUDENTS
TAP THEIR
POSB WATCH
OR SMART
CARD ON
TERMINALS
TO PAY FOR
FOOD

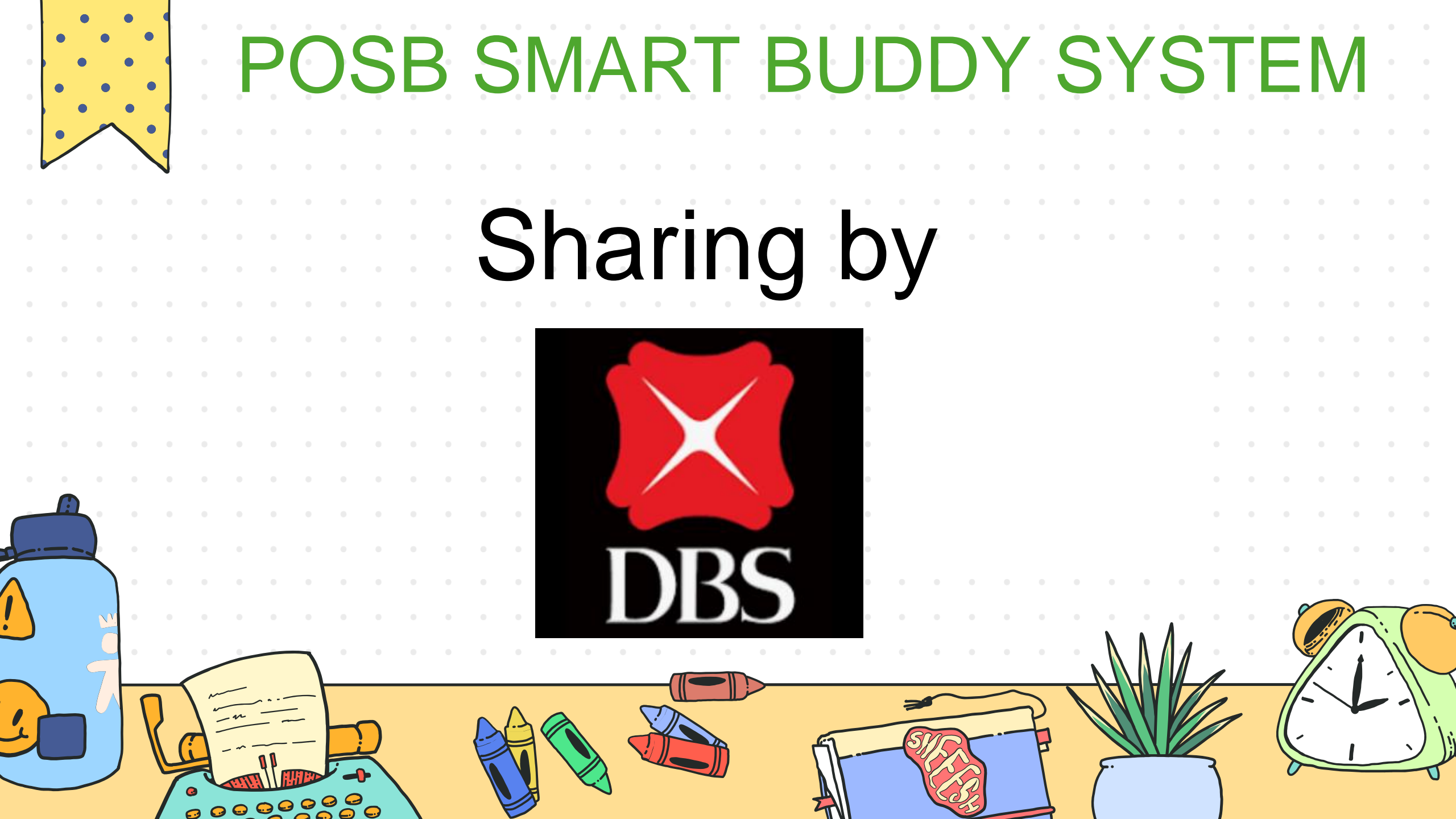


POSB SMART
BUDDY
TERMINALS
@ CANTEEN
STALLS FOR
CASHLESS
PAYMENT



POSB SMART BUDDY SYSTEM

Sharing by



Overview: The POSB Smart Buddy Programme

- Launched in Aug 2017, it is the **World's First In-school Wearable Tech Programme** to enable a contactless payments ecosystem to cultivate sensible saving and spending habits among young students.
- Supports students covered under the **Financial Assistance Scheme (FAS)**, providing a **unified payment solution for every student**.
- **Received more than 10 international awards and accolades** for innovation, seamless digital payments and excellent customer banking experience.
- In Apr 2022, we are the **first bank to sign an MOU with MOE** to roll-out Smart Buddy e-payment options to all (330+) MOE schools in Singapore by 2025.



What are the Benefits for Parents & Kids?



Cultivate good money habits early with POSB Smart Buddy.

It lets your child

- Pay digitally in school (canteen and bookshop) and outside of school (NETS retailers)
- Track spending and savings
- Set savings goals

Note: The Smart Buddy card / watch is not recommended for transport use (i.e. MRT and Buses) as full adult fare will be charged.

Learn the concept and value of money via discussions about allowance and savings while using the Smart Buddy mobile app.

Smart Buddy

Save Regularly with Smiley Stamps
Simply complete 1 stamp card every month to enjoy a **10% bonus!**

- ♥ Your child may tap his / her Smart Buddy at the bookshop to get Smiley Stamps for S\$0.50 each.
- ♥ Monitor your child's Stamp Savings on the Smart Buddy app.
- ♥ Simply complete 1 Smiley Savings Card (i.e. 20 stamps) per month to receive a 10% bonus!

Note: Total Stamp Value and 10% bonus (i.e. S\$3) will be credited to your child's account by the 10th of the subsequent month.

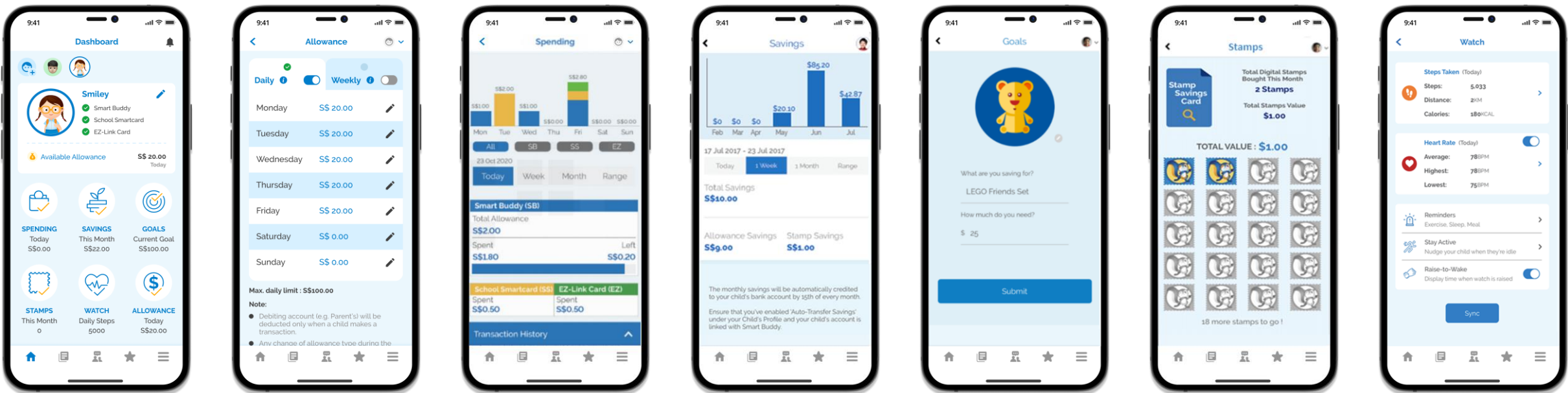
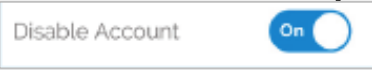
The Smart Buddy Mobile App

- Parent(s) can set **daily or weekly allowances** for your child
- Parent(s) can get an overview of your child's **spending** in and out of school in real time
- Track your child's **savings** progress and teach them the value of money
- If your child misplaces or loses the Smart Buddy watch or card, parent(s) can **disable** the card immediately.



Online User Guide:

www.posb.com.sg/sbapp-guide 🔍



The Smart Buddy Card / Watch

- Make contactless payments at **school canteen and bookshops**, and outside of school at **over 10,000 NETS merchants** island wide
- Develop **healthy habits** with Smart Buddy watch



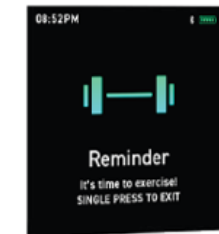
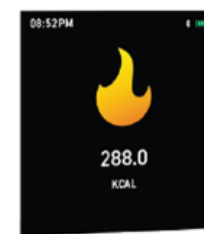
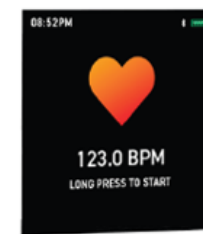
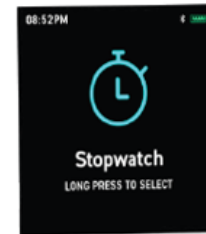
Key features of Smart Buddy Watch



Features

- ✓ Digital/Analog clock
- ✓ Fitness Tracker
- ✓ Heart Rate Tracker
- ✓ Stopwatch
- ✓ Reminders/Nudges

Tap to pay and utilize the fitness tracking and reminder features to develop healthy habits.





Sign up for a free Smart Buddy Card / Watch today!

www.posb.com.sg/sb-schools



Register for POSB Smart Buddy today

-  Parents need a **POSB or DBS Deposit Account**
-  (Optional) **My Account** for kids



* The Smart Buddy Pack (with your card / watch) will be sent to your registered mailing address within 7 working days upon successful application.

Sign up here:

go.posb.com.sg/sb-roadshow



Get your
Smart Buddy
Pack* for
FREE

